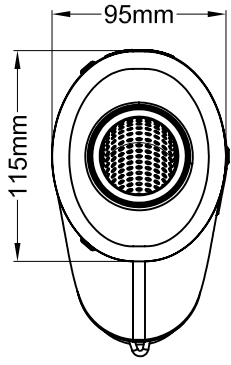


Vista da "A"

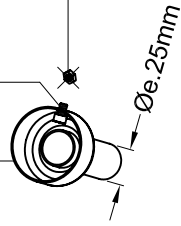


303457802

Dado M5 / Nut M5
NON USARE !
DON'T USE !

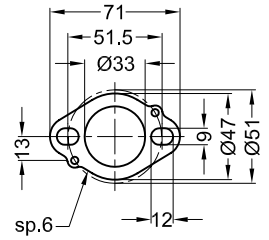
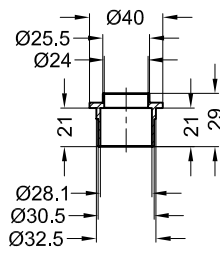
Vite a brugola M5x6
Allen screw M5x6

dB-killer
Cod.303457801



Vista "B"

Boccole "205296" Flange "138A"



Targhetta metallica adesiva
Sticky metal label
Cod.416918



Staffa in Inox
Stainless steel bracket
Cod.083297001

2 Rondelle piane
2 Plain washers
Ø6 x Ø12

2 Viti a brugola
2 Allen screws
M6 x 10

Componente fornito in confezione e da utilizzare
sulle motociclette non dotate di sonda Lambda :
By-packed component to be used only on
motorcycles not provided with Lambda probe :
Tappo/Plug M18x1,5 (Cod.204888)



PEDANA PASSEGGERO DX
PASSENGER'S RH FOOTBOARD

2 Dadi esagonali flangiati M8
2 Hexagon flange nuts M8

Guarnizione / Gasket
Cod.205958

Collettore finale in Inox
Stainless steel final manifold
Cod.308743204

Guarnizione Lambda
Lambda gasket
Cod.202185

Collettore secondario in Inox
Stainless steel secondary manifold
Cod.308743203

Collettore primario DX in Inox
R.H. Stainless steel primary manifold
Cod.308743202

Collettore primario SX in Inox
L.H. Stainless steel primary manifold
Cod.308743201

Vite a brugola
Allen screw
M8 x 55

Rondella piana
Plain washer
Ø8 x Ø16

.Tubetto "SBK"
in gomma silconica
."SBK" rubber tube
.Molla "SBK" a trazione
."SBK" extension spring

Vite a brugola
Allen screw
M8 x 20

2 Rondelle piane
2 Plain washers
Ø8 x Ø24

.5 Tubetti SUPER-CORTI in gomma silconica
.5 Extra-short rubber tube
.5 Molle SUPER-CORTE a trazione
.5 Extra-short extension spring

Art.3297

Impianto completo 2/1 Leovince "Cobra" - RACING per

KAWASAKI NINJA 300 i.e. ('13)