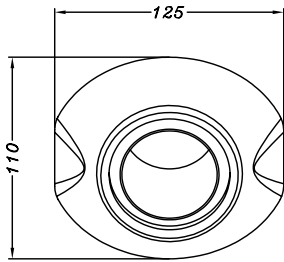
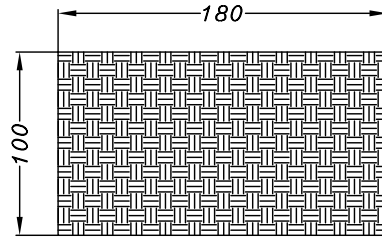


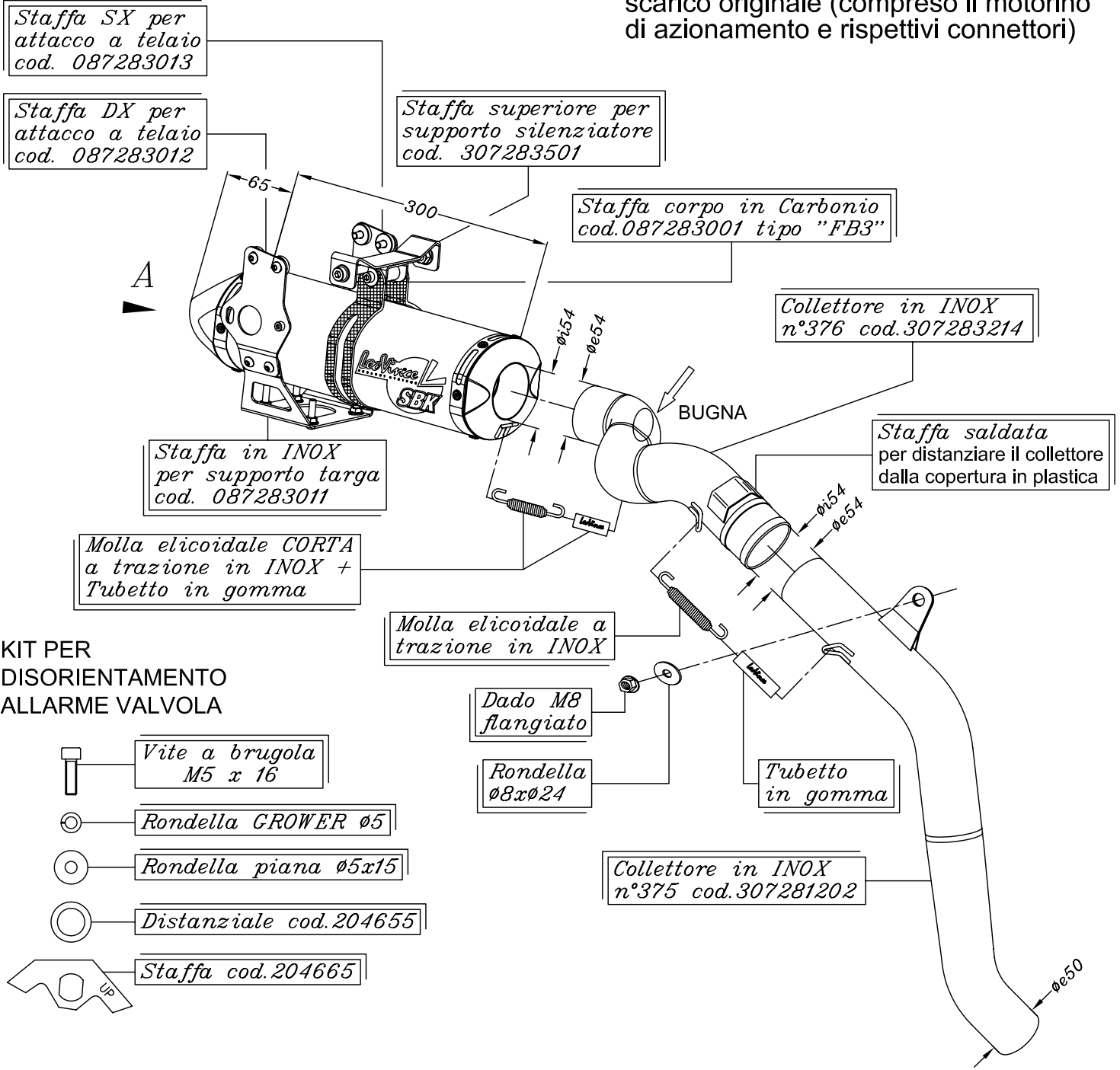
VISTA DA "A"




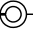


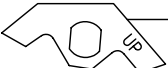
TESSUTO ADESIVO ISOLANTE



N.B.: Asportare completamente la valvola di scarico originale (compreso il motorino di azionamento e rispettivi connettori)



KIT PER DISORIENTAMENTO ALLARME VALVOLA

-  Vite a brugola M5 x 16
-  Rondella GROWER $\phi 5$
-  Rondella piana $\phi 5 \times 15$
-  Distanziale cod. 204655
-  Staffa cod. 204665

Art. 7290C KAWASAKI ZX-6R 636 NINJA i.e. ('05)
 KAWASAKI ZX-6RR 636 NINJA i.e. ('05)

Slip-on SBK FACTORY <<BIG>> TITANIO - Passaggio STANDARD - RACING